



Service Information
No. SI-E4-016/1

Austro Engine GmbH
Rudolf-Diesel-Strasse 11
A-2700 Wiener Neustadt
Tel: +43 2622 23000
FAX: +43 2622 23000-2711

SERVICE INFORMATION

No. SI-E4-016/1

Distribution:	Portal
Date:	06.12.2021

1. BASIC INFORMATION

1.1. SUBJECT

Cylinder Head (CH) Identification – Alternative Methods

1.2. RECORD OF REVISIONS

REV. NO	DATE	REASON
0	04 May 2021	First issue
1	06 Dec 2021	Added engine serial number manufactured with the new CH; General descriptions revised

1.3. ENGINES AFFECTED

Type: E4
Model: E4, E4P
Serial Number(s): all

1.4. REASON

This Service Information contains guidance on identifying the installed cylinder head version.

1.5. DEFINITIONS AND ACRONYMS

CH	Cylinder Head
Old Cylinder Head	Cylinder Head having p/n E4A-12-100-000 or E4A-12-300-000
New Cylinder Head	Cylinder Head having p/n E4A-12-500-000
SI	Service Information
s/n(s)	Serial Number(s)

First Issue Date			Rev. No.	Revision Date			Page
04	May	2021	1	06	Dec	2021	1-4



Service Information
No. SI-E4-016/1

Austro Engine GmbH
Rudolf-Diesel-Strasse 11
A-2700 Wiener Neustadt
Tel: +43 2622 23000
FAX: +43 2622 23000-2711

1.6. INFORMATION

As of these serial numbers, the engines are manufactured only with the cylinder head p/n E4A-12-500-000

E4-A-06000	and subsequent
E4-B-06000	and subsequent
E4-C-06000	and subsequent
E4-P-06000	and subsequent
E4P-C-06000	and subsequent

Note: engines having lower s/n series may have installed the old or the new CH.

To identify the CH installed refer to the Engine Maintenance Manual E4.08.04 Ch. 85 (latest revision) or to this Service Information.

First Issue Date			Rev. No.	Revision Date			Page
04	May	2021	1	06	Dec	2021	2-4

- I. The **old cylinder head** has a bore located at the wastegate side sealed with a cap (p/n E4A-16-200-301-000 engraved on the top of the cap). A bracket is installed where the boost pressure actuator is fixed. When the cap and the bracket are installed, the old cylinder head is installed. When the boost pressure actuator is directly mounted on the CH cover, the new cylinder head is installed.

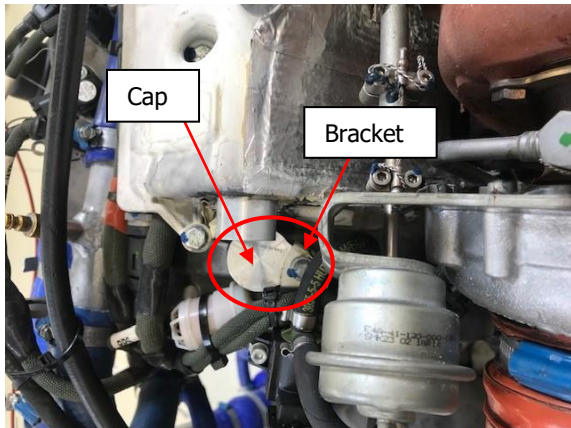
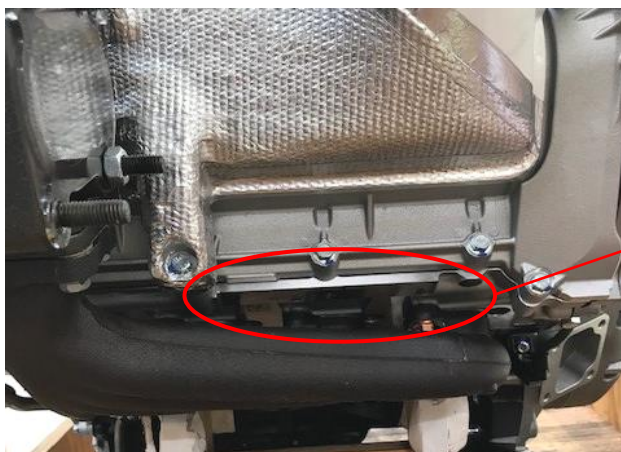
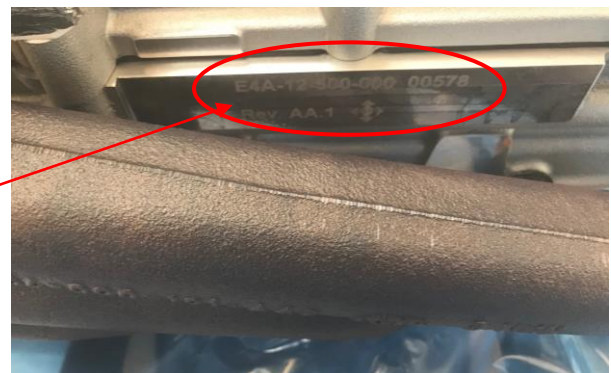

Fig. 1 Version 1 (old)

Fig. 2 Version 2 (new)

- II. The **new cylinder head** p/n E4A-12-500-000 is laser marked on the lower side, near the exhaust. When removing the engine cowling, it is visible with the aid of a mirror and light (if necessary). The 5-digit number following the CH p/n is the serial number (refer to Fig. 3 and Fig. 4).


Fig. 3 Version 2 (new)

Fig. 4 Version 2 (new)

First Issue Date			Rev. No.	Revision Date			Page
04	May	2021	1	06	Dec	2021	3-4

The **old cylinder head** has a Mercedes-Benz p/n casted on the lower side, near the exhaust. When removing the engine cowl, it is visible with the aid of a mirror and light (if necessary). Refer to Fig. 5.



Fig. 5 Version 1 (old)

2. REMARKS

NOTE: SI are used only:

- To distribute information from Austro Engine GmbH to our customers.
- To distribute applicable information/documents from our suppliers to our customers with additional information.

First Issue Date			Rev. No.	Revision Date			Page
04	May	2021	1	06	Dec	2021	4-4